



BI-40-xtra Slim Electric Fireplace  
shown with Mantle Surround in Gray Bark

# PANORAMA SERIES

ELECTRIC FIREPLACES  
INDOOR • OUTDOOR

*Amantii*

# SLIM

## REACHING NEW HEIGHTS

The Panorama Slim Series of built-in electric fireplaces have been designed to give you the maximum in flexibility in selecting a unit that perfectly suits your needs. The stylish electric fireplace will be a focal point in any room, indoor or outdoor.

At just 6 3/4" in depth, the Slim is a practical choice for new construction projects and renovations alike. As well as giving you the ability to install your fireplace with your choice of finishing material built


right to the glass for a "clean face" design or using the provided black metal surround. Your choice – your design!

Featuring the vibrant Fire & Ice® flame set, with just a click of your remote you can easily change the flame color from blue to purple to violet to orange or yellow. Additional media options available for purchase.


## IDEAL APPLICATIONS


- Residential spaces
- Patios
- Outdoor spaces
- Commercial spaces
- Restaurants
- New construction or renovations


## KEY FEATURES


 Heater & Fan  
Flame operates with or without heat

 Hard-wire ready.  
Thermostat hard-wire ready

 Illuminate decorative media like never before with ambient canopy lighting in 13 colors

 Slim 6 3/4" comes with large glass chunks, clear & blue diamond fire glass media, black steel surround that can be installed if preferred

 Perfect for zone heating. Approx. 500 sq. ft. 4800 BTUs

 FIRE & ICE® Flame presentation.  
Three light strips allow for yellow, orange, blue, violet & rose colored flames

## TECHNICAL SPECS

Volts	120
Amps	12.5
Watts	1500 max
Heater On	1500 watts high, 750 watts low
Heater Off	22 watts
Rotor Motor	1 at 5 watts
BTU	4800

BI-40-SLIM-OD



\*Height, Width, Depth: 23 5/8 x 38 5/8 x 6 3/4  
Glass Viewing Area: 12 x 34 1/4  
Surround Size: 15 3/4 x 38 5/8  
\*\*Shipping Size: 44 7/8 x 9 x 25 1/3  
Shipping Weight: 72 lbs. Glass Included

BI-50-SLIM-OD



\*Height, Width, Depth: 23 5/8 x 49 5/8 x 6 3/4  
Glass Viewing Area: 11 5/8 x 45 1/4  
Surround Size: 15 5/8 x 48 5/8  
\*\*Shipping Size: 25 1/3 x 55 x 9  
Shipping Weight: 92 lbs. Glass Included



### BI-72-SLIM-OD

\*Height, Width, Depth: 23 5/8 x 72 1/8 x 6 3/4  
Glass Viewing: 11 7/8 x 68 3/4  
Surround Size: 15 5/8 x 72 1/8  
\*\*Shipping Size: 25 1/3 x 82 1/3 x 9  
Shipping Weight: 137 lbs. Glass Included



### BI-60-SLIM-OD

\*Height, Width, Depth: 23 5/8 x 58 5/8 x 6 3/4  
Glass Viewing: 11 7/8 x 55 1/4  
Surround Size: 15 5/8 x 59 5/8  
Shipping Size: 25 1/3 x 64 5/7 x 9  
Shipping Weight: 107 lbs. Glass Included

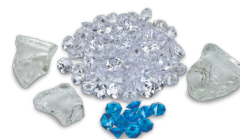
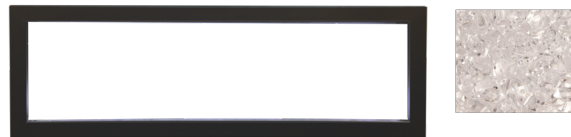
### BI-88-SLIM-OD



\*Height, Width, Depth: 23 5/8 x 88 5/8 x 6 3/4  
Glass Viewing: 11 5/8 x 84 3/4  
Surround Size: 15 5/8 x 88 1/8  
\*\*Shipping Size: 25 1/3 x 98 2/5 x 9  
Shipping Weight: 160 lbs. Glass Included

### INCLUDED ACCESSORIES

The Panorama Slim series come with clear decorative media and our ICE media kit including large glass chunks, clear and blue diamond media and optional black steel surround, plus a remote.



*\*Remote control may not be exactly as shown*



# PANORAMA SERIES | ELECTRIC FIREPLACES

## FIRE GLASS

Our decorative fire glass media is a beautiful addition to your fireplace. Turn your fireplace into a expressive work of art by simply adding our decorative fire glass media. Our fire glass adds a distinctly modern feel to your gas fireplace - mix colors and textures for a unique appearance.

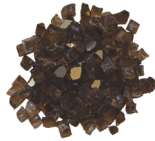
Our decorative fire glass is tempered and will not melt or degrade, some discoloration is normal on glass that is placed directly on the flame. Always wear protective gloves when handling fire glass media.

One 5lb container of media will cover 1 square foot.

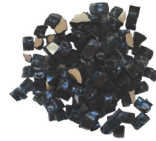
AMSF-GLASS-01



AMSF-GLASS-02



AMSF-GLASS-03



AMSF-GLASS-04



AMSF-GLASS-05



AMSF-GLASS-06



AMSF-GLASS-07



AMSF-GLASS-08



AMSF-GLASS-09

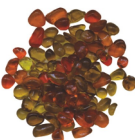


AMSF-GLASS-10



## Decorative Media Options

AMSF-GLASS-11



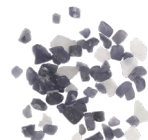
AMSF-GLASS-12



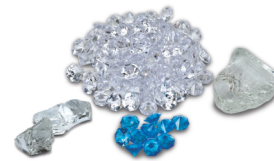
AMSF-GLASS-13



AMSF-GLASS-14



FI-105-DIAMOND



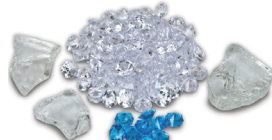
FI-106-DIAMOND



FI-107-DIAMOND



FI-109 DIAMOND



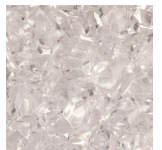
LOG SET



LRG LOG SET



CLEAR





## DESIGNER MEDIA KITS

Add incredible value with designer media kits including deluxe log sets, glass and stone media and decorative embers.

### DESIGN-MEDIA-BIRCH-10PCE



### DESIGN-MEDIA-OAK-10PCE



### DESIGN-MEDIA-14PCE



### DESIGN-MEDIA-BIRCH-15PCE



### DESIGN-MEDIA-15PCE



### DESIGN-MEDIA-6PCE



Images are not to scale, please visit your local dealer to view the actual accessories.

Variations in the color and shade are inherent in all printing processes, the actual colors may vary slightly from those shown.

**Note:** Log sets and Designer Media Kits will fit in all sizes of the following models - Panorama DEEP, TRU VIEW XL and CUBE ONLY.

(Depending on the size of the fireplace model, some logs may not be needed.)