



BI-40-xtra Slim Electric Fireplace  
shown with Mantle Surround in Gray Bark

# PANORAMA SERIES

ELECTRIC FIREPLACES  
INDOOR • OUTDOOR

*Amantii*

# EXTRA SLIM

## INCREDIBLY THIN AT JUST 4"


Our Panorama series family just got better with the addition of the Extra Slim! With an opening height of 11-7/8" and available in four sizes, you'll find a unit that is perfect for any space in your home, business or commercial space. At just 4" in depth, the XS is perfectly suited to installations where wall depth is at a premium.


Boasting our FIRE & ICE® Flame presentation with three color LED light strips allowing for multi-color flame options. With just a click of the included remote control, choose from blue, rose, violet, yellow or orange colored flames. The Extra Slim model comes standard with clear decorative media with additional media options available for purchase.

## IDEAL APPLICATIONS

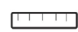
- Residential spaces
- Patios
- Outdoor spaces
- Commercial spaces
- Restaurants
- New construction or renovations

## KEY FEATURES


 Heater & Fan

 Hard-wire ready.  
Thermostat hard-wire ready

 Rated for indoor & outdoor use including bathrooms

 Very thin – only 4" in depth

 Perfect for zone heating. Approx. 500 sq. ft. 4800 BTUs

 FIRE & ICE® Flame presentation.  
Three light strips allow for yellow, orange, blue, violet & rose colored flames

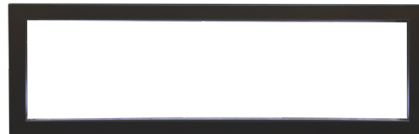
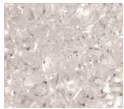
## TECHNICAL SPECS

|             |                                   |
|-------------|-----------------------------------|
| Volts       | 120                               |
| Amps        | 12.5                              |
| Watts       | 1500 max                          |
| Heater On   | 1500 watts high,<br>750 watts low |
| Heater Off  | 22 watts                          |
| Rotor Motor | 1 at 5 watts                      |
| BTU         | 4800                              |

## INCLUDED ACCESSORIES

The Panorama Extra Slim series come with clear decorative media, plus a remote.

*\*Remote control may not be exactly as shown*



## BI-30-XTRASLIM



\*Height, Width, Depth: 19 7/8 x 29 1/8 x 4  
Glass Viewing Area: 11 7/8 x 25 1/4  
Surround Size: 15 7/8 x 29 1/8  
\*\*Shipping Size: 23 x 35 3/5 x 7 2/7  
Shipping Weight: 51 lbs. Glass Included

## BI-40-XTRASLIM



\*Height, Width, Depth: 19 7/8 x 39 1/8 x 4  
Glass Viewing Area: 11 7/8 x 35 1/4  
Surround Size: 15 7/8 x 39 1/8  
\*\*Shipping Size: 23 x 45 3/5 x 7 2/7  
Shipping Weight: 56 lbs. Glass Included



### BI-50-XTRASLIM

\*Height, Width, Depth: 19 7/8 x 49 1/8 x 4  
 Glass Viewing Area: 11 7/8 x 45 1/4  
 Surround Size: 15 7/8 x 49 1/8  
 \*\*Shipping Size: 23 x 55 3/5 x 7 2/7  
 Shipping Weight: 67 lbs. Glass Included



### BI-60-XTRASLIM

\*Height, Width, Depth: 19 7/8 x 59 1/8 x 4  
 Glass Viewing Area: 11 7/8 x 55 1/4  
 Surround Size: 15 7/8 x 59 1/8  
 \*\*Shipping Size: 23 x 65 3/5 x 7 2/7  
 Shipping Weight: 77 lbs. Glass Included

## BI-40-XTRASLIM MANTEL-SURROUND



### Beautifully Inspired

Amantii's newest line of birch wood mantel-surrounds bring the beauty of genuine birch wood into any space. With four nature inspired colors to choose from, you will find a mantel-surround that is perfect for any space in your home, business or commercial setting. Amantii has designed a mantel-surround for your BI-40-XTRASLIM fireplace that will compliment every style.

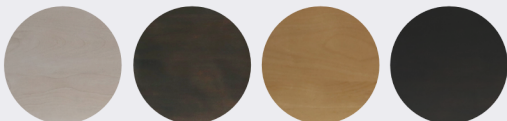
All our mantel-surrounds have been crafted from birch wood with a paint wash application reflective of the variety of colors found in a birch tree forest.

As with all genuine products, variations to the natural wood grain will mean there could be slight variations that may differ from the catalog images or samples.

Variations will occur in color, character, tone and grain from product to product. Slight variations between samples and finished goods should be anticipated. In addition, a touch up pen has been included in the packaging should there be any imperfections caused by the shipping of this product.

The BI-40-XTRASLIM mantel-surrounds have been approved for use in kitchens and bathrooms. The mantel-surrounds cannot be used in outdoor settings.

White Birch • Grey Bark • Natural Birch • Knotty Black



# PANORAMA SERIES | ELECTRIC FIREPLACES

## FIRE GLASS

Our decorative fire glass media is a beautiful addition to your fireplace. Turn your fireplace into a expressive work of art by simply adding our decorative fire glass media. Our fire glass adds a distinctly modern feel to your gas fireplace - mix colors and textures for a unique appearance.

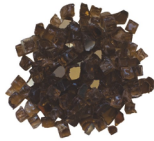
Our decorative fire glass is tempered and will not melt or degrade, some discoloration is normal on glass that is placed directly on the flame. Always wear protective gloves when handling fire glass media.

One 5lb container of media will cover 1 square foot.

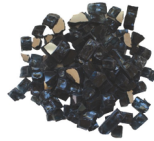
AMSF-GLASS-01



AMSF-GLASS-02



AMSF-GLASS-03



AMSF-GLASS-04



AMSF-GLASS-05



AMSF-GLASS-06



AMSF-GLASS-07



AMSF-GLASS-08



AMSF-GLASS-09

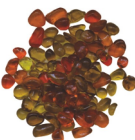


AMSF-GLASS-10



## Decorative Media Options

AMSF-GLASS-11



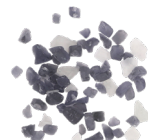
AMSF-GLASS-12



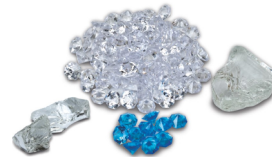
AMSF-GLASS-13



AMSF-GLASS-14



FI-105-DIAMOND



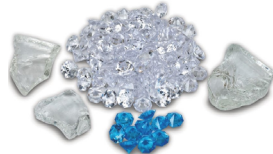
FI-106-DIAMOND



FI-107-DIAMOND



FI-109 DIAMOND



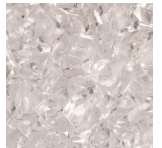
LOG SET



LRG LOG SET



CLEAR



## DESIGNER MEDIA KITS

Add incredible value with designer media kits including deluxe log sets, glass and stone media and decorative embers.

### DESIGN-MEDIA-BIRCH-10PCE



### DESIGN-MEDIA-OAK-10PCE



### DESIGN-MEDIA-14PCE



### DESIGN-MEDIA-BIRCH-15PCE



### DESIGN-MEDIA-15PCE



### DESIGN-MEDIA-6PCE



Images are not to scale, please visit your local dealer to view the actual accessories.

Variations in the color and shade are inherent in all printing processes, the actual colors may vary slightly from those shown.

**Note:** Log sets and Designer Media Kits will fit in all sizes of the following models - Panorama DEEP, TRU VIEW XL and CUBE ONLY.

(Depending on the size of the fireplace model, some logs may not be needed.)