

ST36-CFP, ST48-CFP, ST60-CFP, ST72-CFP

**Models: MEZZO36/48/60/72ST-B, CRAVE4836/6048/7260/8472ST-B, ECHEL36/48STIN,
 MEZZO36/48/60/72ST, CRAVE4836/6048/7260/8472ST**

Panel Installation Instructions



Leave this manual with party responsible for use and operation.

CAUTION! Risk of Cuts or Abrasions. Wear protective gloves and safety glasses during installation.

KIT COMPONENTS

- (1) Right Front Panel
- (1) Left Front Panel
- (1) Right Back Panel
- (1) Left Back Panel

Note: Only for use when CFT fronts are used on both sides of the appliance.

For Appliances: 48, 60 and 72 in.

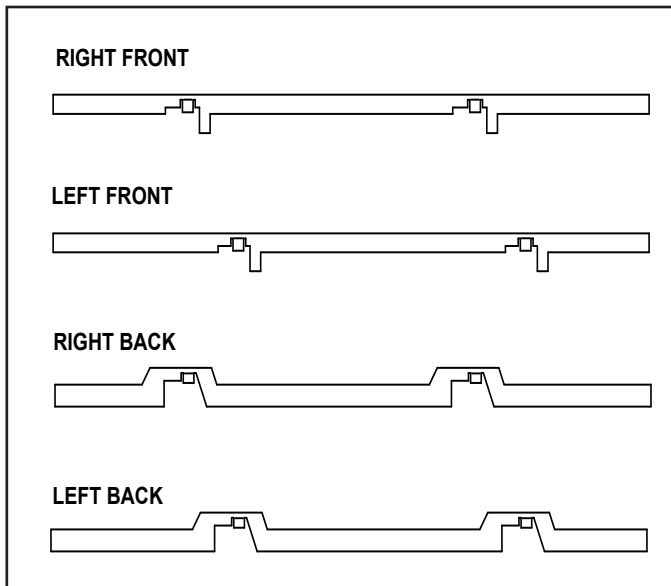


Figure 1. 48, 60, 72 in. Panel Identification

For Appliances: 36 in.

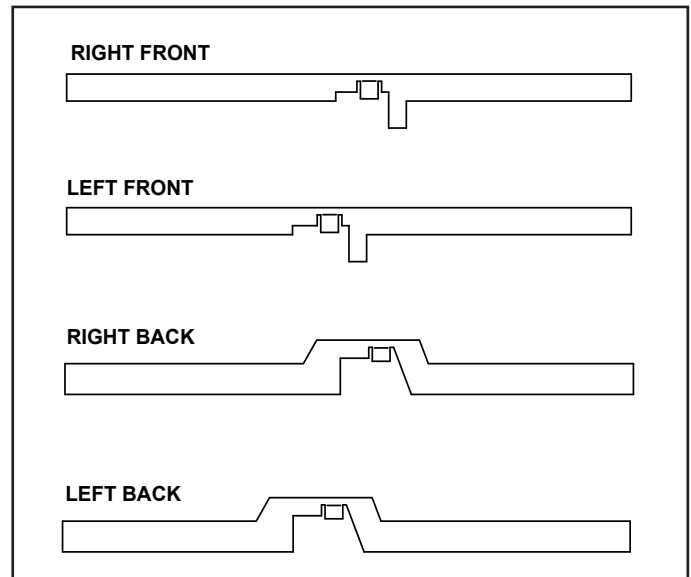


Figure 2. 36 in. Panel Identification

Instructions

1. Remove door from the front side of the appliance. Set door aside in a safe location, preferably a soft surface such as carpet or cardboard.
Note: The front side of the appliance is where the controls are located.
2. Locate the Right Front panel. See Figure 1 or 2 (depending on the appliance).
3. Bend the two short tabs outward 45 degrees. See Figure 3 & 4.

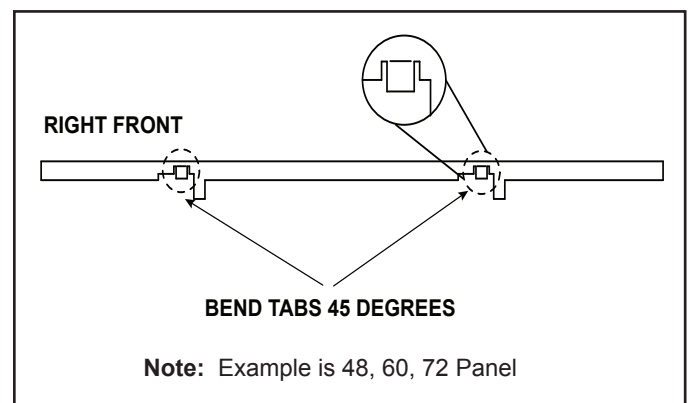


Figure 3. Bend the Tabs 45 degrees

4. Insert the panel at the top right side of the appliance.
The panel is placed over the glass clips with the bent tabs resting behind the glass clips. See Figure 4.
5. Slide the panel to the right until it reaches the outer wrap of the appliance. See Figure 4.
6. Locate the Left Front panel. See Figure 1 or 2 (depending on the appliance).
7. Bend the two short tabs outward 45 degrees. See Figure 3 & 4.
8. Insert the panel at the top left side of the appliance.
The panel is placed over the glass clips with the bent tabs resting behind the glass clips. See Figure 5.
9. Slide the panel to the left until it reaches the outer wrap of the appliance.
10. Replace door.

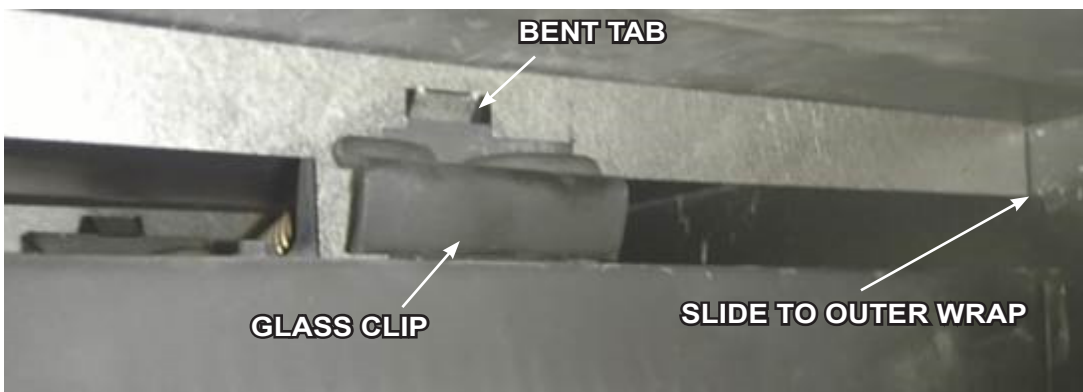


Figure 4. Slide Panel to Outer Wrap (FRONT RIGHT VIEW)

11. Follow steps 1-10 for the reverse (back) side of the appliance using the Right and Left Back Panels. See Figure 5.



Figure 5. Panel over Glass Clip (BACK VIEW)

Please contact your Hearth & Home Technologies dealer with any questions or concerns.
For the location of your nearest Hearth & Home Technologies dealer, please visit www.hearthnhome.com.

Hearth & Home Technologies
7571 215th Street West, Lakeville, MN 55044
www.hearthnhome.com