

KNIGHTSBRIDGE

GDS60 – DIRECT VENT GAS STOVE



FEATURES

UP TO 35,000 BTU'S • HEAT RADIATING CERAMIC GLASS • YELLOW DANCING FLAMES™

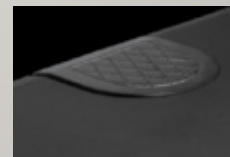
- 30 1/2" h x 27" w x 19 1/2" d
- Advanced burner system produces the most realistic YELLOW DANCING FLAMES™ in the industry
- Larger viewing area with its new updated design
- ACS (Anti-Condensation Switch) controls pilot usage for cold climate installations
- B-Vent Adapter Kits allow installation into existing chimneys
- Flame/heat adjustment for maximum comfort and efficiency
- Compact, easily accessible and user-friendly controls
- Equipped with 100% SAFE GUARD™ gas control system for your peace of mind

napoleonfireplaces.com

OPTIONS / ACCESSORIES



METALLIC BLACK AND MAJOLICA BROWN FINISHES AVAILABLE



CAST IRON TRIVET PAINTED BLACK



ANDIRONS PAINTED BLACK



REMOTE CONTROLS