

# MARQUIS II SERIES

Direct Vent Gas Fireplaces



The Marquis II series gas fireplace fills your home with comfort. Watch the scene unfold with an expansive view of the flames as they wrap around split logs. The authentic masonry appearance and accent lighting enhance the beautiful fire. Come home to the single-sided or see-through Marquis II series gas fireplace, and enjoy the entertainment and romance you deserve.





## Marquis II Quick Look

- ClearView™ glass gives you an expansive view of the flames and realistic split logs
- Showcase the interior with accent lighting
- Customize the interior with up to four options
- Perfect for medium and larger rooms
- Available in 36" or 42" single-sided models, and 42" see-through model
- Up to 57,500 BTUs



## CUSTOMIZE YOUR MARQUIS II FIREPLACE

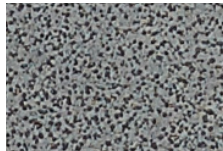
### Front Finishes



Bronze



Charcoal



Pewter

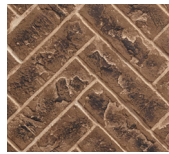
### Interior Panel Options



Cottage Red



Tavern Brown



Tavern Brown  
Herringbone  
(single-sided only)



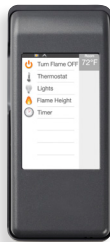
Reflective Black  
Glass  
(single-sided only)

### Controls

#### IntelliFire™ Touch RC400 touchscreen remote

A large LCD screen and simple navigation provide easy operation.

Features: on/off, flame height adjustment, lights adjustment, thermostat mode, room temperature readout, child lock, timer mode, automatic battery backup, cold climate mode, power vent, wall docking station.



### Move heat where you want it

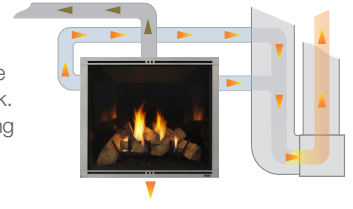
#### Heat-Zone™ Technology

Draw heat from your fireplace to another room in your home. Redirect up to 50% of the heat, while reducing wall temperatures above the fireplace.



#### Heat Duct Technology

Send the warmth from your fireplace to the rest of your home via the furnace ductwork. Redirect up to 50% of the heat while reducing wall temperatures above the fireplace.



#### Heat Out Technology

Draw heat from your fireplace and direct it outside. Redirect up to 40% of the heat while reducing wall temperatures above the fireplace.



### Install virtually anywhere

#### Power Venting Technology

A fan-powered accessory with slim venting can zigzag throughout your home – up, down, over or under – making it possible to install a gas fireplace virtually anywhere.



**IntelliFire Touch Ignition System** IntelliFire Touch is the most advanced and intuitive IntelliFire system, making operating your fireplace simple, smart and safe. Select the wireless wall switch or touchscreen remote control for the solution that fits your life.

**Direct Vent Technology** Direct Vent fireplaces remove 100% of combustion exhaust and odors from your space. These sealed fireplaces provide optimal heat, conserve energy and ensure clean indoor air quality.



For more information about Majestic efficient and environmentally-friendly products, please visit [majesticproducts.com](http://majesticproducts.com)

### Limited Lifetime Warranty<sup>1</sup>

The strongest in the industry, Majestic provides a limited lifetime warranty on gas-burning products of the most important aspects: firebox and heat exchanger.

1: For full warranty details go to [majesticproducts.com](http://majesticproducts.com). The information provided in this literature is for planning purposes only and subject to change. Please consult the installation manual for actual installation. Actual product appearance may differ from product images. Fireplace, stove and insert surfaces get extremely HOT and can cause severe burns if touched. Keep a safe distance away. To learn more visit [www.majesticproducts.com](http://www.majesticproducts.com). © 2017 Hearth & Home® Technologies

Above: Marquis II 42" see-through with front in Charcoal and Tavern Brown brick interior  
Other side: Marquis II 42" shown with front in bronze and Tavern Brown Herringbone brick interior

