



Hearth & Home Technologies Inc.
20802 Kensington Blvd.
Lakeville, MN 55044
www.fireplaces.com

INSTALLATION INSTRUCTIONS

WC42S - WEATHER SHIELD COVER

This weather shield cover is designed for use with outdoor woodburning fireplaces. Refer to the installation instructions supplied with the unit for the correct accessories to be used. If you encounter problems regarding code approvals, or if you need clarification of the instructions contained here, contact your local distributor/dealer, or the Technical Services Department, Hearth & Home Technologies Inc., 1-888-427-3973.

Note: An arrow (➔) found in the text signifies change in content.

Tools Required:
Phillips Head Screwdriver
Safety Gloves

ITEM	DESCRIPTION	QTY.
1	WC42S - Stainless Steel Weather Shield	1
2	Column Brackets	4

CAUTION:
Edges are sharp. Safety gloves are recommended to avoid injury.

Step by Step Installation Instructions:

1. Remove the four brackets from the plastic bag.
2. One at a time, loosen the screws on the columns (do not remove the screws), slide the bracket under the screw head and tighten the screw to secure the bracket in place. See Figure 1. Install all four brackets in this matter.
3. The doors may be left on the fireplace but they need to be closed and latched securely in place.



Figure 1 - Loosen Screws

4. Pick up the cover and slide the top of the cover in first. See Figure 2. Make sure that you slide it in behind the door track and against the doors.
5. Continue sliding the cover up and then slip it in flush with the fireplace. See Figure 3. Make sure that the sides of the cover engage with the brackets installed in Step 2. See Figure 4 for a completed view.



Figure 2 - Slide Cover into Place

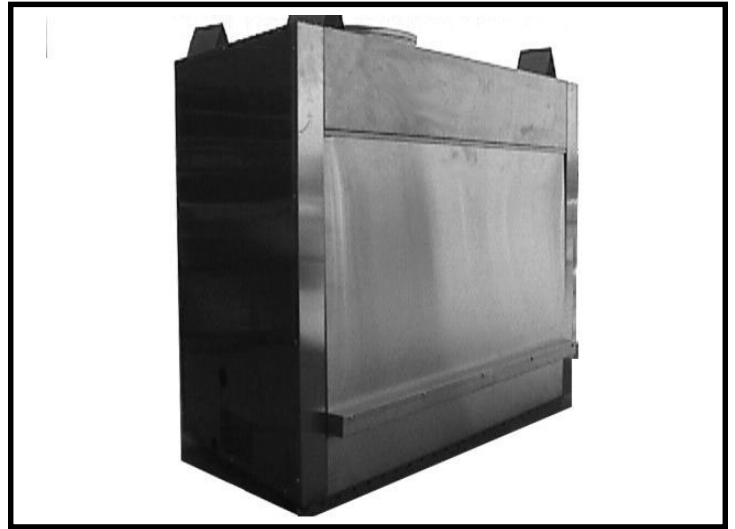


Figure 4 - Final View (side)



Figure 3 - Sliding Cover Flush